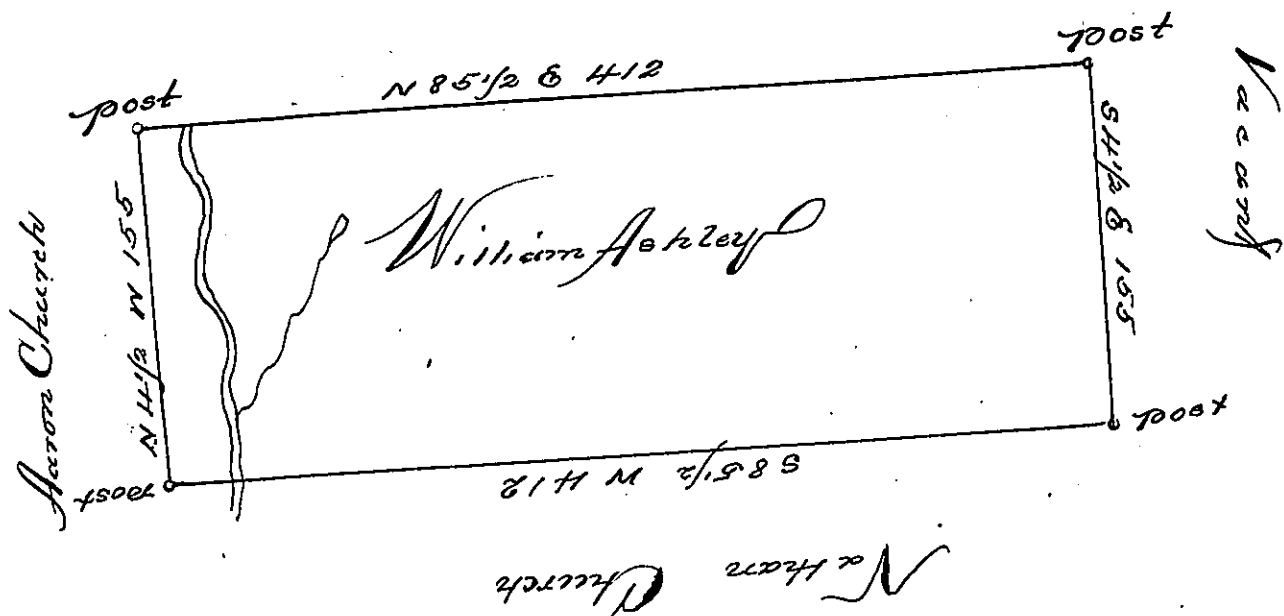


Donation Land



Situate on the waters of Beaver Creek in District No. 3, Alle-
 gany County, Containing 400 acres 20th allowance, surveyed
 23rd May 1795 in pursuance of a Warrant granted William
 Astley April 21st 1794.

Bern Stokely D.J.

Saml. Brodhead Esq.
 J.G.

IN TESTIMONY that the above is a copy of the original remaining on file in
 the Department of Internal Affairs of Pennsylvania, made
 conformably to an Act of Assembly approved the 16th day of
 February, 1833, I have hereunto set my Hand and caused
 the Seal of said Department to be affixed at Harrisburg,
 this sixth day of May 1902.

Jameson Pitta
 Secretary of Internal Affairs.